

How to find the Bias

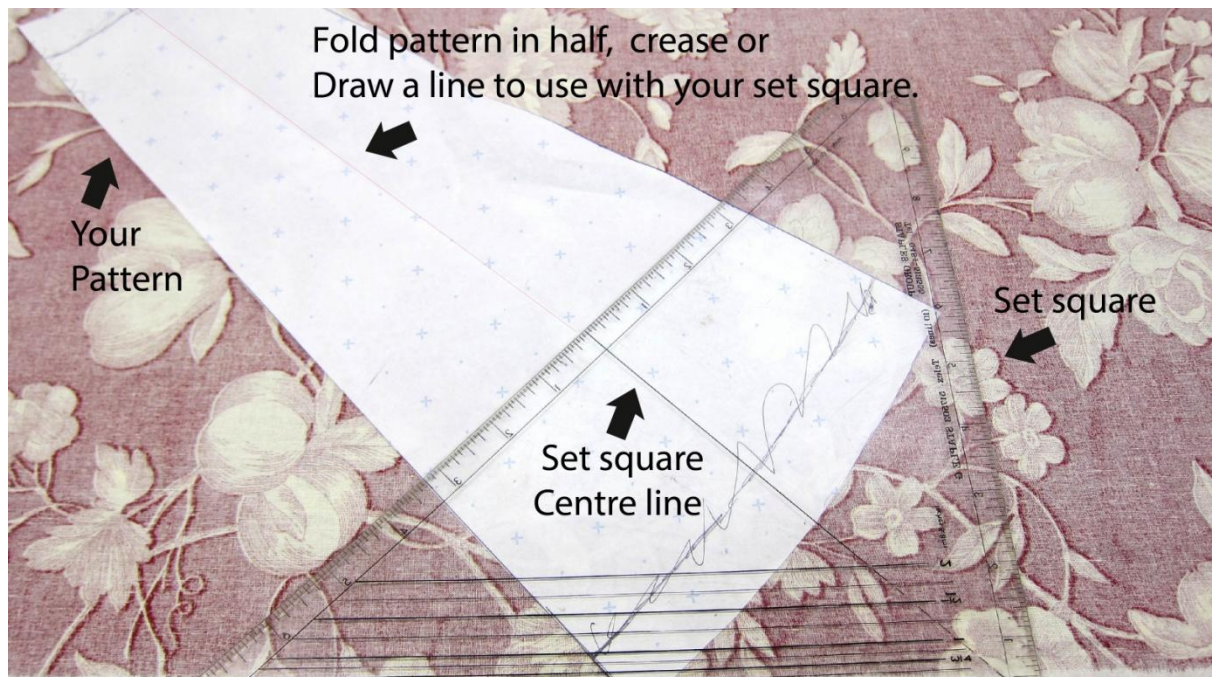
Cut on the Bias (cross of the textile)

There is one very important rule which must be observed when making tailored soft shades. The fabric (your textile) must always be cut on the bias so that the stretch is even in all directions. To cut on the bias, the fabric is rotated at a 45° angle.

How to find the Bias

- Fold your pattern in half and crease, or draw a line down the centre.
- Layout your fabric on a table keeping the selvedge to your table edge.
- Place a set square on the selvedge edge
- Align the centre line on your pattern to the centre line of the set square.
- Draw around the pattern with [tailors chalk](#) or a pencil.

Remove the set square and pattern, you are ready to cut the fabric on the bias.



Place your set square on the selvedge edge of the fabric and align centre line with the pattern line to find bias

Related information

Make the Pattern

If you would like to view some detailed information how to make your pattern.

[click here](#)

How to fix the cover to the frame

We list some common methods which can be changed to suit the maker and the fabric being used.

[click here](#)

Recommendations

If you want some more detailed information into making lampshade we recommend purchasing Elizabeth Cake fabulous new book **“Make your own Lampshades”**

[click here](#) for more information.

